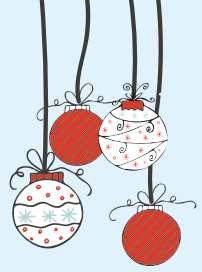


CHRISTMAS TIME CHECKLIST FOR RESIDENTS OF A HOUSING COOPERATIVE

WITH THIS CHECKLIST CHRISTMAS AND NEW YEAR WILL GO SMOOTHLY



BROKEN FAIRY LIGHTS INTO A SEPARATE WASTE COLLECTION POINT

Check the condition of your Christmas lights before using them. Change burned out lamps into new ones immediately. Do not use broken lights, as they might cause an electric shock!

In outdoors, only use lights meant for outdoors and attach them to outdoor sockets. Make sure that the transformer of the fairy lights is suitable for outdoor usage. One must not attach outdoor lights for example into an extension cord that is attached to an indoor socket.

Broken LED-candles and fairy lights belong to electrical and electronic device recycling. Waste collection points can be found for example from www.kierratys.info. You can also take electrical and electronic waste to Sortti-stations.

CHRISTMAS HAM'S FAT DOES NOT BELONG TO DRAINS OR TOILETS!

Ham's fat is runny when hot but hardens when cooled down. The fat causes bad blockages in the sewer system of the housing cooperative when it is cooled down. Such blockages in turn often cause extensive and expensive water damages. One must not pour Christmas ham's fat into the drain or the toilet. Also, food leftovers do not belong to the toilet.

Once again Kinkkutomppu collects ham fat to be utilized in several cities. Check collection points from www.kinkkutomppu.com

GIFT WRAPPING PAPER DOES NOT BELONG TO PAPER RECYCLING

Gift wrapping paper does not usually belong to paper or cardboard recycling. Gift wrapping paper belongs to mixed waste.

Sort the shiny plastic gift wrapping strings into mixed waste. Paper strings can be placed in cardboard recycling. Gift wrapping bows and fabric ribbons are recommended to be saved and reused if possible.

During Christmas time, the waste bins of housing cooperatives are often too full. Make every resident's Christmas easier by flattening boxes before you take them to cardboard recycling or mixed waste bins. With the help of HSY's waste guide you can sort your waste correctly!

Visit hsy.fi/wasteguide

REMEMBER FIRE SAFETY

Supervise your candles and outdoor fires. Without supervision the fire can cause dangerous situations very quickly. Make sure your apartment has a working fire alarm. If you burn outdoor fires, supervise them outside. One must not place outdoor fires on wooden porches or near burning material.

GIVE YOUR NEIGHBOURS CHRISTMAS PEACE

The quiet-time policy of the housing cooperative should still be followed during Christmas. Avoid cleaning, rug beating, washing clothes or any loud activities during Christmas peace. Make sure, that also your family and pets calm down. Remember to wish your neighbours merry Christmas if you bump into them on the yard or the staircase!

MAKE YOUR HOUSE SAFE FOR CHRISTMAS VACATION

Keep your house looking like someone is living in it, even if you are gone on a Christmas vacation. In a row house, ask your neighbour to sweep the snow from in front of the door. In an apartment building, ask them to check that the mail has been pushed fully into the apartment through the mail slot. Close the security lock. Make sure that the maintenance has a key to the security lock, in case there will be a need to get into the apartment during the vacation for example due to a water damage.

NEW YEAR TIN IS HAZARDOUS WASTE MATERIAL

Selling New Year tin has been forbidden since March 2018. If one can still find old tin from the back of the cabinets, it is recommended to use it again. Tin includes a lot of lead and thus is hazardous waste. One must not put tin among regular waste. If you want to get rid of tin take them to a collection point for hazardous waste. Waste collection points can be found from www.kierratys.info.

Instead of melting tin, one can melt beeswax or sugar and cast New Year's predictions from them. Keep in mind, that sugar is burning hot when melted and beeswax may easily burst into flames on a hot stove. Thus, it is recommended to do the casting on a water bath.

BE CAREFUL WITH FIREWORKS

One must be extremely cautious when working with fireworks near the residential area. It is forbidden to fire fireworks from the balcony, and they must be directed away from the buildings, cars and people. Also consider pets; fireworks may cause stress to animals. Used and dirty cardboard firework packages belong to mixed waste.

CHRISTMAS TREES ARE COLLECTED DURING THE EMPTYING OF THE WASTE BINS

In most cities, waste management takes care of the disposal of Christmas trees after Epiphany. In such case, you may leave your Christmas tree near the waste bins in a way that it does not prevent regular emptying of the waste bins. If your housing cooperative does not arrange the disposal of Christmas trees, you can take your Christmas tree to a separate Christmas tree collection point or Sortti-Station, cut it up for firewood or pieces suitable for a mixed waste bin. Plastic Christmas trees belong to mixed waste bins.

Check HSY's directions for recycling Christmas trees from hsy.fi

TAKE THIS CHECKLIST WITH YOU!

BRALEVA

Asumisen kaikki palvelut